



T-Series: For multi-pad use, T-Series pad attachments can be configured inline or with crossarms on a spreader beam.

ANVER offers a variety of vacuum pad attachments that are designed for flat surface applications. There are two basic configurations for most pad attachments: the T-Series and T1-Series (see photos below). The total vacuum pad area to a tube cross-section area ratio must be at least 2:1 and it is crucial to lift safety. Suitable tube-to-pad attachment radii that satisfy this safety requirement are listed in the table below. See pages 5-8 for the minimum number of pads required for each VT Tube Lifting System.

Note: When attaching to the side of the load, these areas must be doubled for a 4:1 ratio.

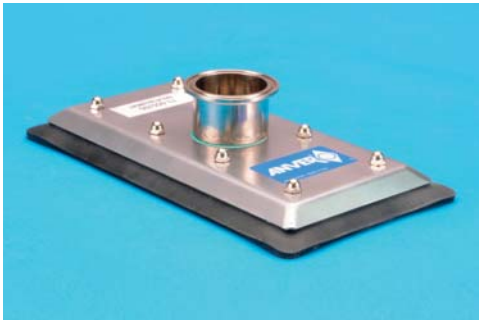
Features

- Replaceable Seals are available in Neoprene (standard), Silicone and Natural Gum Rubber
- Quick-Disconnect Attachments make it easy to change pads for load handling versatility
- Ideal for Lifting Boxes as well as other Flat Semi-Porous loads
- Curved pads for lifting objects with curved surfaces are also available
- Rugged Extruded Aluminum Spreader Beams make Pad Adjustments Easier
- A Variety of mounting styles are available to adapt to any vacuum lifting system

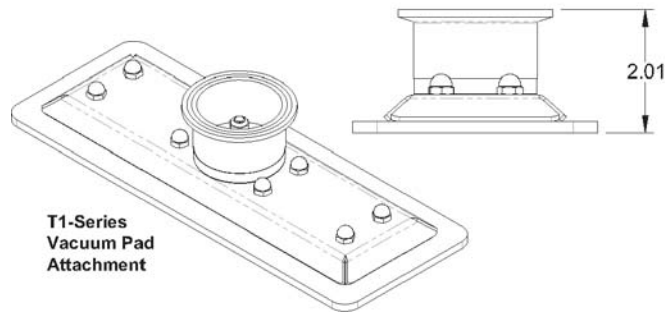


T-Series Clevis Mount: For multi-pad use, T-SV-Series pad attachments can be turned 90° depending on your application

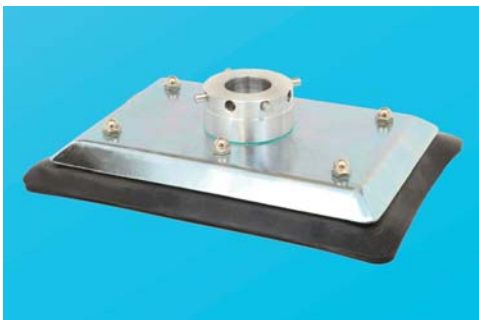
Lifting Systems	Tube Area [Sq in (Sq cm)]	Minimum Pad Area [Sq in (Sq cm)]
VT090	10 (65)	20 (129)
VT100	12 (77)	24 (155)
VT120	18 (116)	35 (226)
VT140	24 (155)	48 (310)
VT160	31 (200)	62 (400)
VT180	39 (252)	79 (510)
VT200	49 (316)	97 (626)
VT250	76 (490)	152 (981)
VT300	114 (736)	228 (1471)



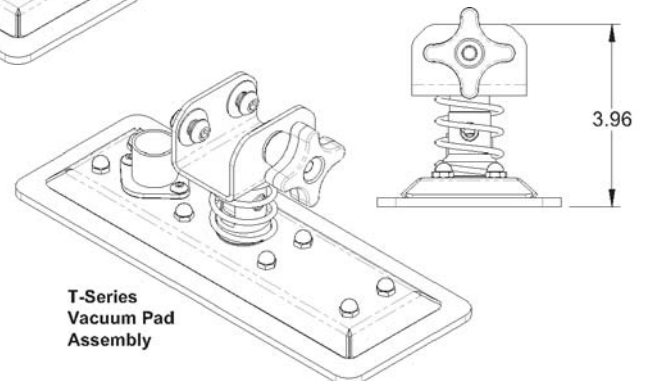
T1-Series: For single pad use. T1-Series pad attachments are equipped with a quick release mount. The control head must have a VT-QRT-M or -S in order to use a single pad.



T1-Series Vacuum Pad Attachment



T1-Series for Pistol Grip Control Heads: For single-pad use. Available upon request.



T-Series Vacuum Pad Assembly

The data shown in the table below are for horizontal lifting only. If you are looking for the minimum number of pads for a particular ergonomic lifting system that appears to be shaded, please contact ANVER for possible solutions.

Pad Number	Dimensions W x L [in (cm)]	Seal Area [Sq in. (Sq cm)]	Port Diameter [in (mm)]	Minimum Number of Pads Required										
				Mini					Standard					
				VT090	VT100	VT120	VT140	VT160	VT180	VT200	VT250	VT300		
030125	3 x 12.5 (7.6 x 31.8)													
*040065	4 x 6.5 (10.2 x 16.5)	16.5 (107)	1.25 (31.8)	2	2									
040085	4 x 8.5 (10.2 x 21.6)	22.5 (145)	1.25 (31.8)	1	2	2								
040105	4 x 10.5 (10.2 x 26.7)	28.5 (184)	1.25 (31.8)	1	1	2	2	4						
040125	4 x 12.5 (10.2 x 31.8)	34.5 (223)	1.25 (31.8)	1	1	2	2	2						
040165	4 x 16.5 (10.2 x 41.9)	46.5 (300)	1.25 (31.8)	1	1	1	2	2	2					
050070	5 x 7.0 (12.7 x 17.8)	24.0 (155)	1.25 (31.8)	1	1	2	2	4	4					
050085	5 x 8.5 (12.7 x 21.6)	30.0 (194)	1.25 (31.8)	1	1	2	2							
050105	5 x 10.5 (12.7 x 26.7)	38.0 (245)	1.25 (31.8)	1	1	1	2	2						
050130	5 x 13.0 (12.7 x 33.0)	48.0 (310)	1.25 (31.8)	1	1	1	1	2	2					
050155	5 x 15.5 (12.7 x 39.4)	58.0 (374)	1.25 (31.8)	1	1	1	1	2	2	2	4	4		
050210	5 x 21.0 (12.7 x 53.3)	80.0 (516)	1.25 (31.8)	1	1	1	1	1	1	2	4	4		
050250	5 x 25.0 (12.7 x 63.5)	98.0 (632)	1.00 (25.4)	1	1	1	1	1	1	1	2	4		
060070	6 x 7.0 (15.2 x 17.8)	30.0 (194)	1.25 (31.8)	1	1	2	2							
060085	6 x 8.5 (15.2 x 21.6)	37.4 (242)	1.25 (31.8)	1	1	1	2	2						
060110	6 x 11.0 (15.2 x 27.9)	49.0 (316)	1.25 (31.8)	1	1	1	1	2	2	2	4	6		
060125	6 x 12.5 (15.2 x 31.8)	57.5 (371)	1.25 (31.8)	1	1	1	1	2	2	2	4	4		
060155	6 x 15.5 (15.2 x 39.4)	72.5 (468)	1.25 (31.8)	1	1	1	1	1	2	2	4	4		
060195	6 x 19.5 (15.2 x 49.5)	92.5 (597)	1.25 (31.8)	1	1	1	1	1	1	2	2	4		
070070	7.0 x 7.0 (17.8 x 17.8)	36.0 (232)	1.25 (31.8)	1	1	1	2	2						
070095	7.0 x 9.5 (17.8 x 24.1)	51.0 (329)	1.25 (31.8)	1	1	1	1	2	2	2	4			
070110	7.0 x 11.0 (17.8 x 27.9)	60.0 (387)	1.25 (31.8)	1	1	1	1	2	2	2	4	4		
070125	7.0 x 12.5 (17.8 x 31.8)	69.0 (445)	1.25 (31.8)	1	1	1	1	1	2	2	4	4		
070165	7.0 x 16.5 (17.8 x 41.9)	93.0 (600)	1.25 (31.8)	1	1	1	1	1	1	2	2	4		
080080	8.0 x 8.0 (20.3 x 20.3)	49.0 (316)	1.25 (31.8)	1	1	1	1	2	2	2	4			
080090	8.0 x 9.0 (20.3 x 22.9)	56.0 (361)	1.25 (31.8)	1	1	1	1	2	2	2	4			
080105	8.0 x 10.5 (20.3 x 26.7)	66.5 (429)	1.25 (31.8)	1	1	1	1	1	2	2	4	4		
080135	8.0 x 13.5 (20.3 x 34.3)	87.5 (565)	1.00 (25.4)	1	1	1	1	1	1	2	2	4		
090095	9.0 x 9.5 (22.9 x 24.1)	68.0 (439)	1.25 (31.8)	1	1	1	1	1	2	2	4	4		
090125	9.0 x 12.5 (22.9 x 31.8)	92.0 (594)	1.25 (31.8)	1	1	1	1	1	1	2	2	4		
100120	10.0 x 12.0 (25.4 x 30.5)	98.0 (632)	1.00 (25.4)	1	1	1	1	1	1	1	2	4		

Notes: * Special order pads may require longer lead time. Please consult ANVER for more information.